

## 1. Product Description

CGDI K2 is a professional multi-functional smart device equipped with Android system, internally integrated Bluetooth and WIFI modules, and a high-definition 5-inch LCD display. It has the characteristics of simple operation, and convenience and ease of use.

## 2. Packing List



CGDI K2 device



Remote programming cable



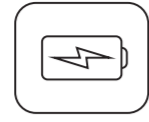
Remote renew cable (solderless) (optional)



Remote renew cable (solder)

▲ Note: Optional accessories need to be purchased separately.

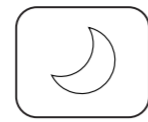
## 3. Specifications



Battery capacity  
4300mAh



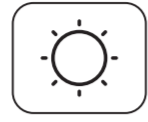
Normal working time  
>9 hours



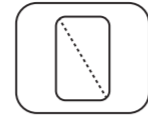
Standby time  
>9 days



Charging current  
800mAh

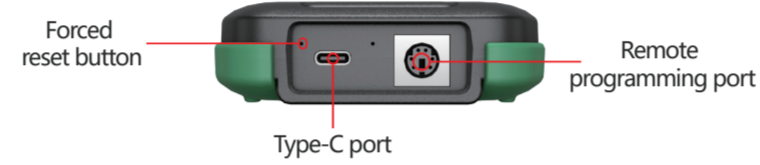


Brightness  
>400NITS



Screen resolution  
1280\*720P

## 4. Device appearance and interface description

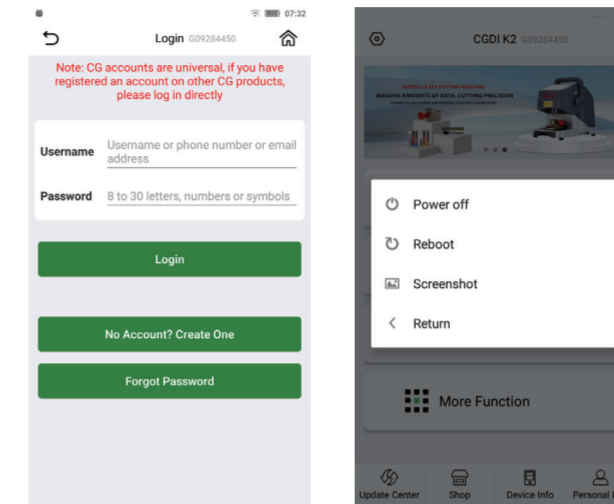


① **Forced reset button:** Insert a tiny pin into the forced reset button hole at the bottom of the device to force the device to shut down.  
② **Remote programming port:** Inserting remote programming cable can be used for remote wired generation; inserting the remote renew cable can be used for renewing.

## 5. Quick Guide

① Press and hold the power button. After the device is turned on for the first time, you need to connect to WIFI to activate the device and update the software and firmware. In order to facilitate the remote points collection, you need to log in to the CG account. If you do not have it, you can click the [No account? Create one] button to register.

② After entering the system, press and hold the power button for 2 seconds, and the following interface will be displayed. Click the corresponding option to perform the corresponding operation.



③ When the screen is on, short press the power button, the device will turn off the screen; when the screen is off and standby, short press the power button to turn the screen on; long press the power button for 5 seconds to force the device to shut down.  
④ The device will automatically shut down when the battery power is less than 5%. Please use a 4.5V-5.5V/1A charger to connect the Type-C data cable to charge.

## - Contact -

WhatsApp: +8615112563501

Email: sales2@cg100procar.com

Web: www.cgprocar.com

Address: building A3, LiLang Software Park,  
Longgang District, Shenzhen, China



600mm

## 6. Main functions

### ① Generate remote for wireless remotes

Enter the [Remote Generation] button from the home page, select corresponding model, as shown in following figure; remove the shell of the remote, and connect it to the remote programming port of the device through the remote programming cable, as shown in following figure. Then click generate remote, select wired generation, confirm generation, and wait for the progress to complete.

### ② Generate remote for smart remote

Select a corresponding model to be generated, as shown in following figure. Place the key on the device coil. Then click generate remote, confirm generation, and wait for the progress bar to complete



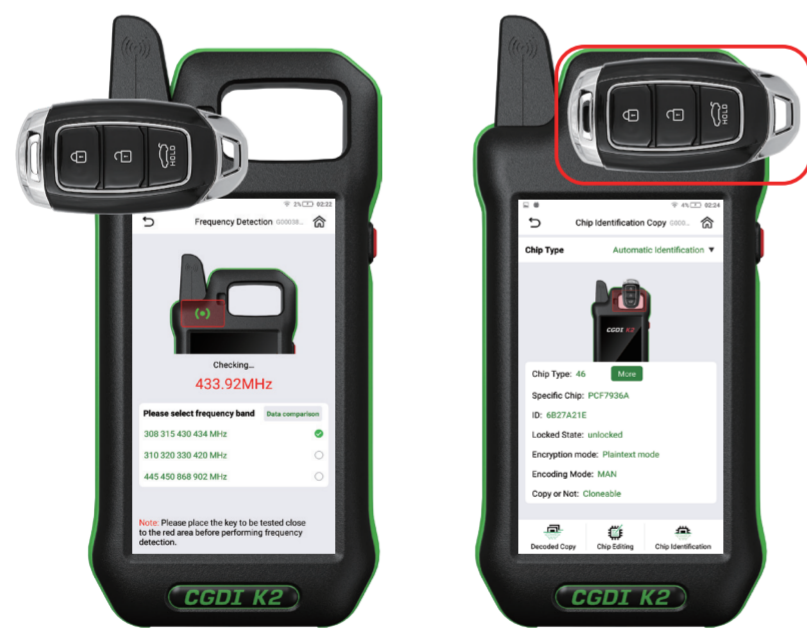
Remote generation for wire remote

Remote generation for wireless remote

③ **Frequency detection**  
Enter the [Frequency detection] button from the home page, select the corresponding frequency band, and place the remote close to the high-frequency detection area, short press any button on the remote.

### ④ Anti-theft chip identification

Enter the [Chip Identification Copy] function interface from the main interface. In the upper right corner of the chip identification function interface, you can choose to specify chip identification or automatic identification. After selecting, place the key above the coil and click [Chip Identification] to display the relevant information of the chip.



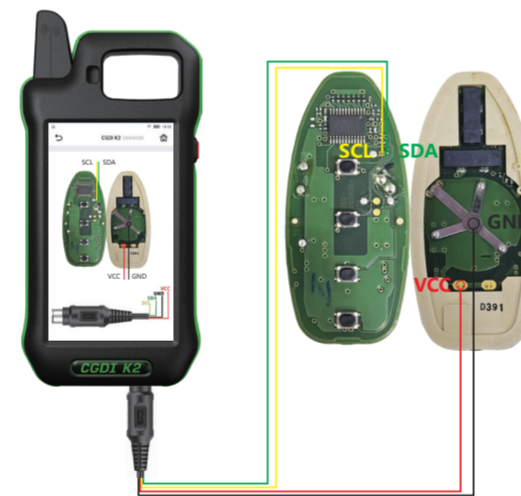
Frequency detection

Anti-theft chip identification

### ⑤ Remote renew

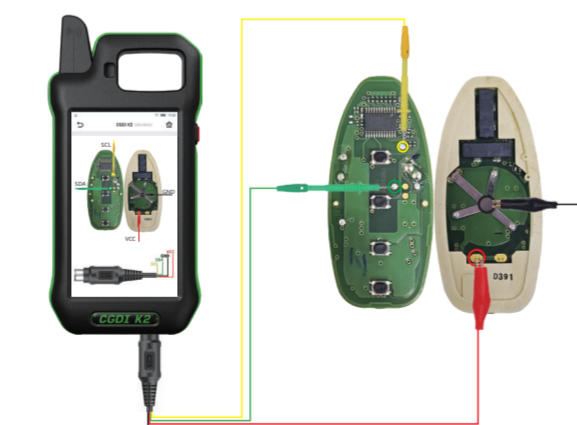
Remote renew will program the data in the key chip. After success, the key can be re-matched. Enter the [Remote renew] button from the [More Functions] button and select a type to be unlocked model. The wiring method can be selected as solder or solder-free.

### a. Use welding for unlocking wire



Refer to the connection to connect the key unlocking wire to the key board, and then connect it with Remote Generation Port.

### b. Use the solderless unlocking wire



Connect the Remote renew cable (solderless) to the remote programming cable of the device, clip the power and ground with a clip on the key board, and connect the other two wires to the test points. After confirming that the key board model and wiring are correct, click Renew to confirm.

### ⑥ MCU Programmer

Enter the [MCU Programmer] button from the [More Functions] button. Select the model and connect according to the wiring diagram, as shown in following figure. After the connection is completed, you can perform operations such as reading, writing, etc.



## 7. Maintenance

Please pay attention to waterproof, dustproof and drop-proof. Do not store or use the device in high temperature, high humidity, flammable and explosive environments. Do not disassemble or modify the internal electronic components of the device without permission. Please protect the display screen well to prevent it from being damaged by sharp objects.

CGDI

CGDI K2

User Manual V1.0

180mm